

MAGICAL! - Cabaret Scenes



ROSLYN KIND
LIVE IN CONCERT

ROSLYNKIND.com

A NEW SHOW
staged & directed by Richard Jay-Alexander
with musical direction by Michael Orland

ROSLYN KIND WHAT THEY'RE SAYING!

Roslyn Kind's dazzling new concert showcase combines Pop hits, romantic ballads and captivating favorites from Broadway & the movies. She also revisits songs from her first album (newly re-released by Sony's Broadway Masterworks) alongside new material and personal stories.

"I want to take people on an emotional journey with songs that I love and songs I feel I can translate to the audience."

From Cabaret Scenes: Gorgeous to look at, with a magical voice to match, she had the audience at her entrance with "It's a Beautiful Day." She then took us on a lovely trip through The Beatles, Leonard Bernstein, Sergio Mendes, and the Bergmans, to name just a few in her hour-long set. Kind is able to pull off the near impossible: an intimacy that is warmly welcomed due to an adorable, sweet, slightly edgy personality, coupled with the confidence of a seasoned performer who knows where her gifts are.

So many highlights: "I Can Cook Too"; "All That Jazz"; "It Only Takes a Moment"; encoring with "Can You Read My Mind?" Kind showed a versatility of emotion, insight, and a superb understanding of everything she was enchanting us with.

Spending an hour with Roslyn Kind reinforces what critics and audiences have long known; she's simply special. It is evident that little has changed with her since she burst on the nightclub scene at the beginning of her career (which has included success on Broadway, movies and television). Her reputation as a fluent vocalist with clarity of tone gives her a natural, emotional connect on well-chosen songs (and several selections that were mainstays from the past.) Kind achieves all that is required. The tone of the evening was relaxed and quite straightforward, and her voice always expressive and intimate. This is an artist with a lot to offer--and nothing to prove. She *arrived* a long time ago.

From the Palm Beach Daily News: Kind brings a winning combination of talent, solid material, and just plain chutzpah to score big.

**"THE REAL DEAL...
MARVELOUS PIPES...
AND ONE POLISHED PERFORMER"**
- Palm Beach Daily News

"SINGS LIKE A DREAM"
- Hollywood Reporter





“My basic reason for being in this business is because it gives me joy to bring others joy. My goal is to make my audience happy, especially in today’s time, with all of the negativity. If you can lighten someone’s heart even just for 75 minutes or so....you’re giving a gift.”

From *BroadwayWorld*: Kind has always had a natural rapport with her audiences and that hasn't changed. Laughing often, she pokes fun at herself with ease. Holding up her 1969 debut RCA album *Give Me You*, with its cover featuring a silly portrait of her sticking out her tongue, she joked, "I'm sorry, they made me do it!"

Singing in a dark, honeyed voice, Kind provides many highlights, including a heartfelt delivery of Ann Hampton Callaway's romantic ballad "Perfect," which was written for her. Other highlights include a reflective nod to The Beatles' with "Fool On the Hill," (also from her first album), a melancholic "Times Like These (A Girl Could Use A Dog)" from *Lucky Stiff* and she has great comic fun with Francesca Blumenthal and Ronny Whyte's offbeat "If He Were Straight And I Was Young" (originally introduced by the late Julie Wilson.)

Her strongest entry comes with a beautifully realized "I Just Have to Breathe," (Bacharach-David) sung in a rich, fibrous voice. Kind has always had a natural affinity for careful phrasing and diction. Roslyn Kind is pitch-perfect...funny, entertaining, heartfelt and heartbreaking.

From the *New York Times*: Romantic ballads, delivered with a swooning intensity, were interspersed with up-tempo numbers that brought out Ms. Kind's inner red-hot mama.

From the *Puerto Vallarta Daily News*: Roslyn Kind proved tonight that she is without a doubt a world class entertainer. With confidence and charisma, she delivered a show that the audience absolutely loved.

“SIMPLY SUBLIME”
- BroadwayWorld

“ENDEARING”
- New York Times



ABOUT ROSLYN KIND...

Roslyn Kind is a dynamic entertainer -- a multi-talented singer, songwriter and actress -- with an acclaimed career that spans film, television, recordings and the Broadway and concert stage.

Most recently, Ms. Kind celebrated the electrifying sold-out New York and Los Angeles premiers of her new concert showcase. *The New York Times* praised the "swooning intensity" of her performance and her "endearing stage personality."

A vibrant musical artist, Miss Kind is a veteran of the concert stage and familiar to international audiences for her headlining appearances at some of the world's most prestigious venues including Lincoln Center, The Hollywood Bowl, Carnegie Hall, The Greek Theater and London's O2 Arena.

Kind relishes every opportunity she has to perform on stage and revels in her unique connection with audiences.

"I love to interact with my audiences, to look them in their eyes. I want each one of them to feel that I'm singing to them personally and hopefully touching their hearts. I want to contribute positively into this world and make people happy. That's what it's all about for me."

Not long ago she shared the concert stage with her sister, Barbra Streisand, during a multi-city US/Canadian and International concert tour. The sisters' special duet of Charlie Chaplin's "Smile" was described as "simply magical" with the Montreal Gazette stating "It was the exact right ending to a night of show biz perfection." In addition to performing memorable duets with her sister, Kind

also shared the stage with her beloved nephew Jason Gould and Grammy Award winning trumpeter Chris Botti.

“The experience of touring with my family was absolutely incredible! And to sing with my sister on stage was a very exciting and loving moment.”

Brooklyn born Roslyn Kind began her career while still in her teens with the release of her first album, *Give Me You* (RCA) in 1969. A whirlwind of performing activity followed including engagements at the nation's top nightclubs, acclaim from *Time Magazine* and three appearances on the top-rated *Ed Sullivan Show* that lead up to her show-stopping New York debut at the Plaza Hotel's legendary Persian Room. Her follow up album, *This is Roslyn Kind* (RCA), and subsequent singles showcased her growth as a recording artist comfortable in a wide range of musical genres. Recently Sony Music's Broadway Masterworks label reissued those albums on CD for the first time.

Throughout the '70s, '80s and '90s Roslyn not only continued to perform worldwide in concert and on TV, but also made her Broadway debut in the revue *3 from Brooklyn* and appeared in several Off-Broadway and regional productions (*Leader of the Pack*, *Show Me Where the Good Times Are*, *Ferguson the Tailor*.) In a critically lauded Los Angeles production of William Finn's *Elegies*; *The Hollywood Reporter* noted, “Roslyn Kind sings like a dream.....”

Kind's third album, *Come What May*, which the *New York Times* described as “splendid and sizzling”, further established her reputation as a virtuoso vocalist possessing impeccable phrasing, a richness and clarity of tone and an undeniable emotional connection to her always first-rate material.





Additionally, her recording of the song "Hold On While You Can" was showcased in the acclaimed independent LGBT themed feature film *Tru-Loved*.

"I like songs I can relate to. The voice is one thing, but you have to tell a story. I live in the lyrics, the story, the interpretation. They have to be true to me and true to my audience. My soft spot is for theatrical pieces. I like to take the audience on a journey of their emotions. I also love to joke a lot, to entertain."

Kind is a frequent presence on television. Her extensive list of credits include a recent appearance on the *TODAY* show with Kathie Lee and Hoda, *Saturday Night Live*, *The Tonight Show*, plus a humorously memorable turn playing herself on CBS's classic sitcom *The Nanny*. In that special episode she performed "*Light of Love*" a song she co-wrote with her frequent collaborator Michael Orland (*American Idol*.)

She also takes pride in humanitarian efforts and works with various animal welfare, Alzheimer's and AIDS related charitable organizations including HSUS, APLA and Broadway Cares Equity Fights AIDS and she loves helping the elderly.

One of the premiere interpreters of popular song, Roslyn Kind continues to succeed in every new facet of her performing career delighting audiences with her spellbinding talent.

"With years of experience I can honestly say that to be in show business, one must have strong convictions and a belief in oneself no matter how big the obstacles may seem. NO DETOURS. Follow your heart on the path to your dreams."

The New York Post summed it up best "*She's so good on so many levels; it's difficult to categorize her. This elegant, beautiful, petite, dynamo delight rules the stage with a royal command that demands adoration from every seat in the house.*"

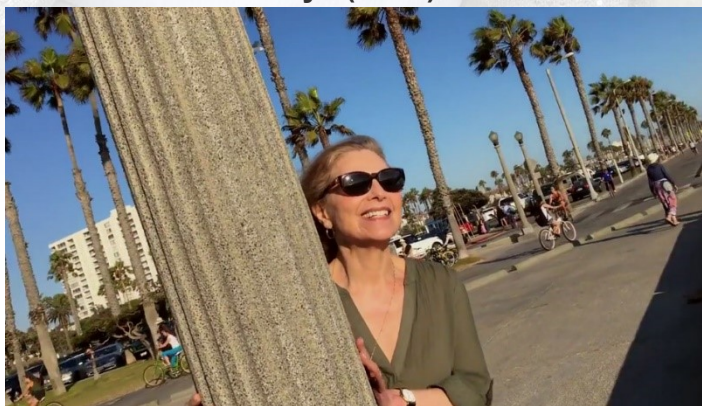
FEATURED VIDEO

Show Highlights



(Click [here](#) or image above to watch - a new browser will open)

"It's a Beautiful Day" (2016) Music Video



(Click [here](#) or image above to watch - a new browser will open)

CONTACT

Website: www.roslynkind.com

Follow Roslyn Kind:

Facebook: facebook.com/roslynkind

Instagram: instagram.com/roslynkind

Twitter: twitter.com/roslynkind

Artist Rep:

Beth Reinstein

breinstein@roslynkind.com